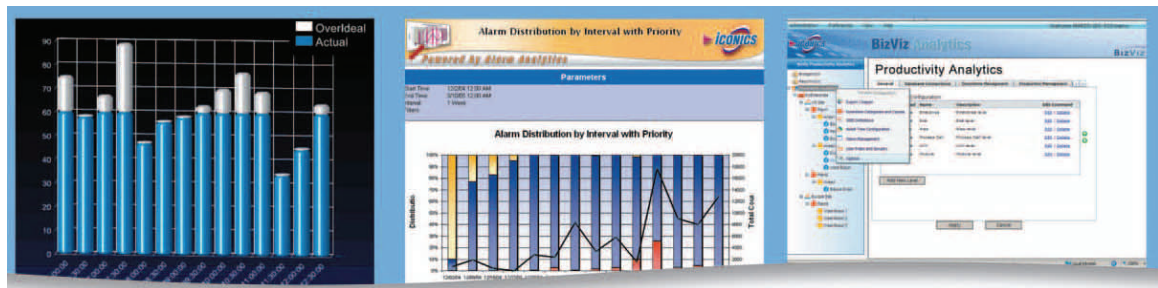


Business Intelligence

Are you looking for a way to optimize your manufacturing processes, save time, energy, and money? Did you know that **Braas Company** offers Enterprise Technology products and services? Here's something you should know... **ICONICS** (2008 Microsoft® ISV Software Partner of the year) **BizViz Productivity Analytics** software provides you with the technology solution you have been waiting for. OEE (Overall Equipment Efficiency) and KPI (Key Performance Indicators) for five manufacturing processes, with both real-time and historical process views that can be expanded to up to 400 manufacturing processes per server.

Ask us about our low cost, low risk temporary trial license today!



Trial Initial Set-Up

- Installation included
- One day on-site training included
- One development seat included
- Seven simultaneous users included
- 100 downtime definitions included
- Can be installed on 2003 or 2008 server, stand-alone server, or virtual machine
- Minimum five manufacturing processes to get started
- Measure up-time, down-time, production rates, and overall performance
- Up to the second real-time updates on your manufacturing process from all enterprise systems

Benefits

- Your cost is less than \$400.00 a month per manufacturing process for the first year
- Your cost is less than \$40.00 a month per manufacturing process after the first year
- Additional manufacturing processes can be added for \$105.00 a month per machine for the first year
- Your cost is less than \$15.00 a month after the first year for each additional manufacturing process
- Additional simultaneous users can be added for less than \$600.00 per simultaneous user
- Unlimited tags

Will not interfere with existing controls or software
Server and Networking costs not included

Pricing is an estimation, contact your Braas Sales Rep



For More Information Contact:

Todd Berner at 515.249.2534
Todd.berner@braasco.com

Or

Tracy Krouse at 952.937.6450
Tracy.krouse@braasco.com

Microsoft®
GOLD CERTIFIED
Partner