

Business

Intelligence

Are you looking for a way to optimize your manufacturing processes, save time, energy, and money? Did you know that **Braas Company** offers Enterprise Technology products and services? Here's something you should know... Save anywhere from hundreds of dollars to thousands of dollars per SCADA or Data collection project! Bundled packages with both OPC-UA and OPC-DA included. One price gets all standard protocols. What an **awesome** deal!

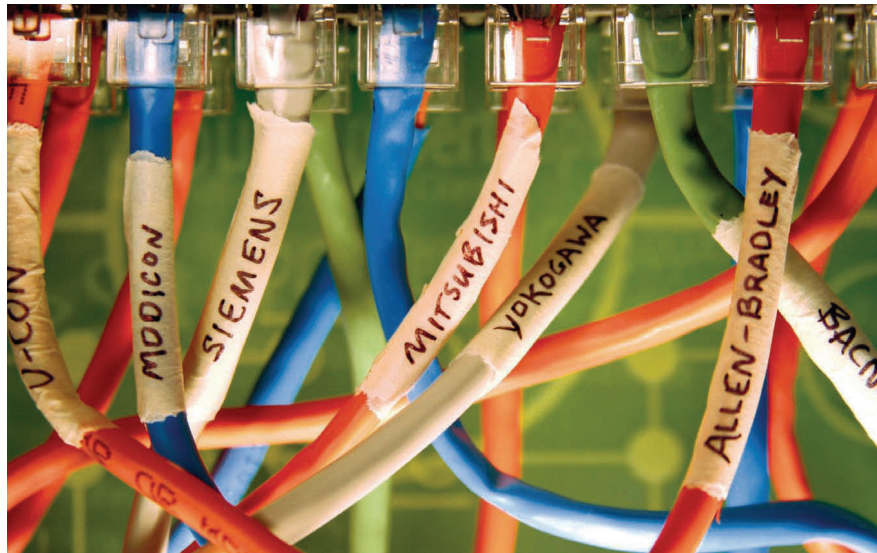
Only available through an authorized ICONICS reseller



Microsoft
GOLD CERTIFIED
Partner



**Awesome for SCADA and
Data acquisition projects
with multiple device
protocols!!!!!!**



OPCUA - KEP - STANDARD

ICONICS OPC UA Kepware Standard Server

License one machine with one standard EX Server. The exclusive **KEPWARE OPC UA Server** with OPC DA functionality for connectivity to more than one hundred different controller types simultaneously from the same machine.

License locally or on a remote licensing server.

\$764.00 (Enable the one you choose)

OPCUA - KEP - STANDARD - M

ICONICS OPC UA Kepware Standard Server-Multi

License one machine with one or more standard EX Server. The exclusive **KEPWARE OPC UA Server** with OPC DA functionality for connectivity to more than one hundred different controller types simultaneously from the same machine.

License locally or on a remote licensing server.

\$1,264.00 (Enable as many as you need)

For More Information Contact:

Todd Berner at 515.249.2534 or Todd.berner@braasco.com

List of Supported Servers

Advanced Simulator Driver
Memory Based Driver
Allen-Bradley ControlLogix, DH+, DF1, EtherNet, Unsolicited EtherNet, and Bulletin 900
Analog Devices
Aromat Serial and EtherNet
AutomationDirect EBC, ECOM, Direct net, and K Sequence
Busware EtherNet I/O
Contrex Serial and M-Series
Cutler-Hammer and ELC
Dataforth isoLynx
DDE Client Driver
DeviceNet (Hilscher Universal)
Fuji Flex
GE CCM, EtherNet, EtherNet Global Data (EGD), SNP, SNPX, and Focas1
Hilscher Universal Driver
Honeywell HC EtherNet, UDC, and EtherNet UDC
Intelligent Actuator Super SEL
Idec
InTouch Client Driver
IOTech PointScan 100
Krauss Maffei EtherNet
Micro-DCI
Mitsubishi Serial, FX, FX Net, and CNC EtherNet
Modbus ASCII, EtherNet, Plus, RTU Unsolicited, and Serial
ODBC Client Driver
Omron FINS EtherNet, FINS Serial, Host Link, Process Suite, and Toolbus
Optimization OptiLogic
Partlow ASCH
Philips P8/PC20
Profibus (Hilscher Universal)
SattBus EtherNet and Serial
Scanivalve EtherNet
Siemens S5, S5 3964R, S7 200, TCP/IP EtherNet, TCP/IP Unsolicited, and S7 MPI
Simatic 505 EtherNet and 505 Serial
SIXNET EtherTRAK I/O and UDR
SquareD Serial
Telemecanique Uni-Telway
Thermo Westronics EtherNet and Serial
Tiway Host Adapter
Toshiba EtherNet and Serial
Toyopuc PC3/PC2 EtherNet and PC2 Serial
WAGO EtherNet
WeatherBug Driver
Yaskawa Memobus Plus, MP EtherNet, MP Serial
Yokogawa Controller Serial, CX, Darwin EtherNet, Darwin Serial, DX EtherNet, DX Serial, DXP, HR, MW100, MX100 and YS100