

INSIDE THIS ISSUE:

Alarm Analytics for Operational Excellence

Application Corner

Local Staff Feature

Training Schedule

LOCATIONS

New Berlin WI
1.800.242.8313

Madison WI
1.800.242.8313

Fox River Valley WI
1.800.242.8313

Eden Prairie MN
952.937.8902
1.800.288.6628

North & South Dakota
1.800.309.5393

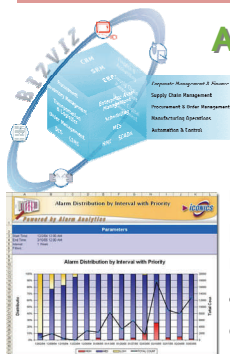
Iowa & Nebraska
1.800.238.8857

Oldsmar FL
1.800.282.8124

Elgin IL
1.877.942.7227

WISCONSIN

ALARM ANALYTICS FOR OPERATIONAL EXCELLENCE



Iconics Alarm Analytics product enables plant personnel to visualize, analyze, and manage alarm information in accordance with the industry best practices. The push for operational excellence in the manufacturing industry is driving the need for more effective alarm analytics. Proper analysis of alarms and events in a manufacturing plant, can reveal significant opportunities for improving current operations and mitigating abnormal situations. Iconics BizViz Alarm Analytics captures and analyzes all alarm and event information to identify frequent alarms, chattering alarms, cross-correlated alarms and more alarm-related issues. This module also records, analyzes, and displays operator-initiated process changes, which then yield significant insight into the performance of the entire system. Contact us today at **1.800.242.8313**, to find out how your company can achieve manufacturing excellence with the use of Iconics software.

What does SCARA stand for? If you know and are the first e-mail into the Wisconsin location, a nice Braas emblazoned item could be yours. Please e-mail your responses to: jeff.plitzner@braasco.com

APPLICATION CORNER



APPLICATION CHALLENGE:

A bottle molding company needed to elevate its product in their packaging area while maintaining equal spacing between a group of 8 bottles, four bottles across the width of the conveyor, two bottles in each row. Additionally, the customer needed to fill a pre-determined amount of air into each bottle before packaging.



SOLUTION: DORNER

Dorner's ESP (Engineered Special Products) group was able develop a cleated, LPZ (Low profile z-frame) series conveyor with additional features. The LPZ frame, which provides adjustable angles for proper incline (or decline), was able to elevate bottles from the filling machines to the packaging area. The LPZ conveyor also had lane guiding, allowing the bottles to separate into four rows as they were elevated to the packaging area.

LOCAL STAFF FEATURE

We are pleased to introduce Jim Beier, who is a new Outside Pneumatic Technology Salesman in southeast Wisconsin. You may have spoken to Jim already, but there are some things you may not know about him. Jim has over 15 years of fluid power experience as well as a proven ability to coordinate multiple client requests with a high level of service. Jim came to us from C.L. Thompson where he spent time in outside sales, operations, and inside sales. Jim lives in the Waterford area and enjoys hunting and fishing. Jim invites Braas clients existing and potential to contact him regarding what Braas can do to be a premier partner to your organization. **Call Jim today at 1-800-242-8313.**



WINTER & SPRING TRAINING CLASSES 2007

Class	Class Code	January	February	March	April
Yaskawa Servo Programming	SMC-101		22nd		26th
Fluid Power Fundamentals	FPF-101	11th		8th	
Machine Safeguarding Fundamentals	MSF-201			14th	
Parker Servo/Stepper Programming	ACR-101		8th		12th
Robotic Programming	Denso Workshop	24th	21st	21st	25th
DVT Vision System Fundamentals	VSF-401	25th		22nd	
In-Sight Vision System Fundamentals	VSF-402		1st	29th	

Classes are held in New Berlin, WI location

Other classes and custom training are available upon request.

Daytime 9:00am - 4:00pm

Cost per class \$150.00

If you would like to attend a scheduled training class or arrange for a custom training class, please call 1.800.242.8313.

YASKAWA SERVO PROGRAMMING



YA-203

This class utilizes Yaskawa's Y-term software and focuses on the SMC4000 series multi-axis controller. This 2 to 4 axis controller features: individual axis configuration as; servo or stepper; standard Ethernet or serial communications; on-board digital and expansion I/O preemptive multi-tasking; and much more... **Topics Include:** Hardware Overview; Controller Configuration; Ethernet Connecting; Debug Commands; Programming Flow; Multi-Tasking and many more...

FLUID POWER FUNDAMENTALS



FPF-101

This class covers Fluid Power principles and technology, air preparation products, air valves (including how to read A.N.S.I. symbols), actuators, and vacuum cup sizing. Hands-on exercises are included in this session giving the student the opportunity to read, assemble, and test pneumatic circuits. **Topics Include:** Description of Pneumatics; Valves, Symbolology and Sizing; Vacuum Technology; Air Preparation; Actuators; Symbolology and Sizing; and Hands-on Instructor Led Exercises

MACHINE SAFEGUARDING FUNDAMENTALS



MSF-201

This class is designed to provide the student with a broad understanding of today's practices and products for machine safety and safeguarding. Our STI Visual OSHA interactive CD-Rom will introduce many of these topics and acquaint students with current requirements. **Topics Include:** Basics of Machine Safety; Control Reliable Circuits, Risk Assessment; Light Curtains, Interlock Guards, Barrier Guards, Gate Guards, Safety Mats, and Two-Hand Controls; Methods of Machine Safeguarding; and E-Stops

PARKER SERVO/STEPPER PROGRAMMING



ACR-101

This class utilizes Compumotor's ACR-View software and focuses on the ACR-9000 series multi-axis controller. This 2 to 8 axis controller features: individual axis configuration as; servo or stepper; standard Ethernet or serial communications; on-board digital and expansion I/O pre-emptive multi tasking; and much more... **Topics Include:** Hardware Overview; Controller Configuration; Ethernet Connecting; Debug Commands; Programming Flow; Multi Tasking; Multi Tasking Program; Common Commands; and Program Structure

ROBOTIC PROGRAMMING



DENSO WORKSHOP

This class teaches the instruction/programming of Denso's New RC7 robot controller. **Topics Include:** Hardware Overview; Controller Configuration; Jogging/Teaching Points; Programming using a Teach Pendant; I/O Interface; Offline Programming Software

COGNEX/DVT VISION SYSTEM FUNDAMENTALS



This class is designed to familiarize the students with vision technology. It is highly recommended that students bring examples of applications for testing. **Topics Include:** Vision Sensor Technology vs. Machine Vision; Terminology; Lighting; Overview of Hardware/Software; Lenses; Software DVT Intellect; Your Specific Application Needs

COGNEX IN-SIGHT VISION SYSTEM FUNDAMENTALS



VSF-402

This class is designed to familiarize the students with vision technology. It is highly recommended that students bring examples of applications for testing.

Topics Include: Vision Sensor Technology vs. Machine Vision; Terminology; Lighting; Overview of Hardware/Software; Lenses; Software In-Sight Explorer; Your Specific Application Needs

